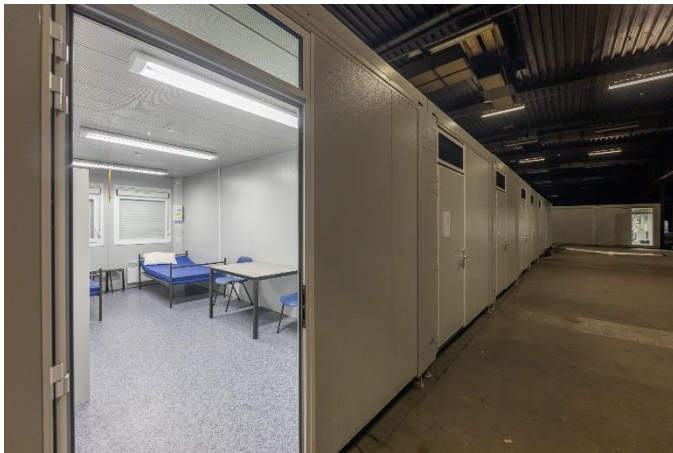


ADVANCE 9118

The **Advance 9118** units are designed to reduce the energy consumption as much as possible. With these units Algeco offers even more comfort and safety, and at the same time ensures maximum speed and progressiveness.



Structure

- Steel frame, constructed from galvanized steel beams
- Stackable up to max. 3 storeys

Roof and ceiling

- Galvanized corrugated steel
- Glass wool with a thickness of 80mm and a vapour barrier - Euroclass A1
- Pre-painted acoustic ceiling panels
- Height under ceiling: app. 2,50m

Outer walls

- 80mm sandwich panel
- Filled with rockwool - Euroclass A1
- Finished with a galvanized embossed steel plate

Inner walls

- 50mm sandwich panel
- Filled with rockwool - Euroclass A1
- Finished with a galvanized embossed steel plate

Floor construction

- PVC flooring
- Waterproof bonded chipboard of 19mm
- 160mm glass wool isolation
- Maximal floor load: 250kg/m²

Outer joinery

- Window frames in white plastic
- Insulating glass 33.1-12-4, tempered glass, $U_g = 1,1W/m^2K$
- Equipped with roller shutters
- Aluminium exterior doors with European mortise lock

Electrical installation

- In accordance with the regulations in force
- Electricity grid standard 3x400V+N
- Distribution board with a 40A/30mA power switch
- Minimum 3 power sockets with child safety
- Three fluorescent fixtures 2x36W
- Movement sensor and detector

Free call

+32 (0) 800 90 485

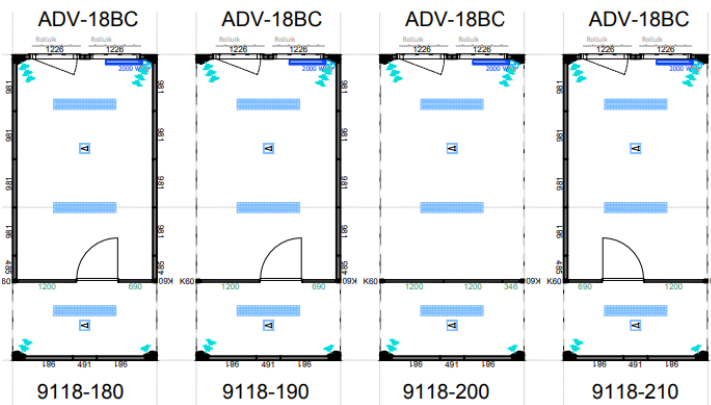
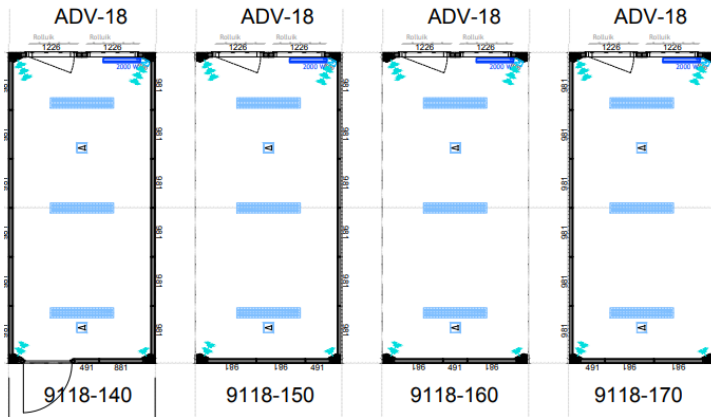
algeco[®]

www.algeco.be

ADVANCE 9118

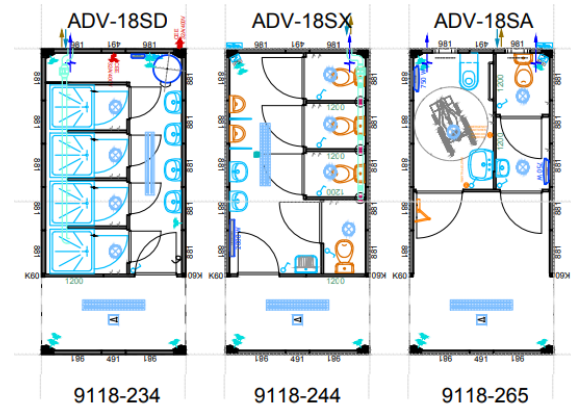
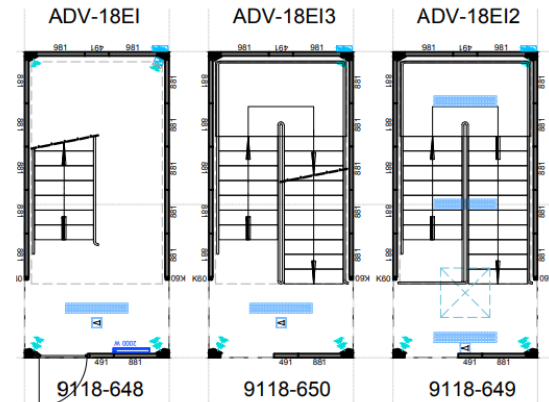
UNITS – 18M²

Empty unit



Empty unit with hallway

Interior staircase



Sanitary unit