

ADVANCE FLASH

Because of its removable wall panels, **Advance Flash** is very flexible and provides many possibilities. The units can be connected and stacked up to one lower and one upper floor, fully in accordance with the customers' wishes.



Structure

- Steel frame, constructed from galvanized steel beams
- Stackable up to max. 2 storeys

Roof and ceiling

- Felt roofer
- Sandwich panels with a wooden lattice and 70mm mineral wool
- Ceiling made from 6mm thick MDF
- Height under ceiling: app. 2,50m

Outer wall

- Wooden lattice
- 70mm mineral wool isolation
- Exterior wall: plywood plate with exterior coating
- Interior plate: MDF

Inner wall

- Wooden lattice
- 60mm mineral wool isolation
- Finished in Sigmulto painted MDF plates

Floor construction

- Linoleum flooring
- 110mm polystyrene EPS 60 isolation plate with a 20mm EPS 300 isolation plate and a 22mm waterproof bonded chipboard on top
- Maximal floor load: 250kg/m²

Outer joinery

- Window frames in plastic, wood or aluminium
- Insulating glass 4/16/4
- Equipped with roller shutters
- Exterior doors equipped with a SKG** security lock and hinges with a thief claw SKG***

Electrical installation

- Electricity grid standard 3x400V+N
- Distribution board with a 40A/300mA power switch
- Two double sockets with child safety
- Six fluorescent fixtures 36W

ADVANCE FLASH

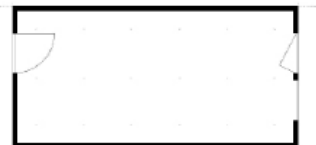
UNITS – 9M²

Entry unit



UNITS – 18M²

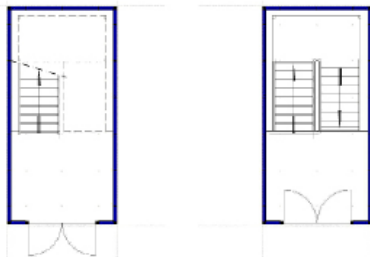
Empty unit



Empty unit with hallway



Interior staircase

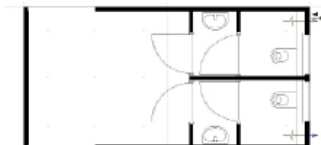


UNITS – 18M²

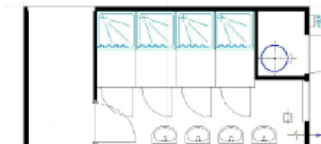
Empty unit with toilet



Sanitary unit



Sanitary unit

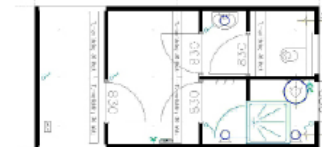


Sanitary unit

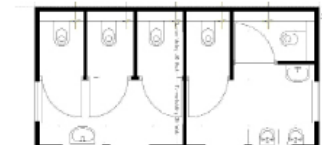


UNITS – 18M²

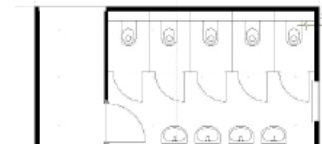
Sanitary unit



Sanitary unit



Sanitary unit



Sauna unit

