

# ADVANCE +

This unit, **Advance +**, is REI(w) 60 qualified. The fire resistance of the lower storey is very important with stacked constructions: the whole may not collapse. Advance + has a unique support structure. The effects after 60 minutes on the loading capacity (R), fire resistance (E) and isolation (I) are minimal, while the protection is maximal.



## Structure

- Steel frame, constructed from galvanized steel beams
- Stacable up to max. 2 storeys

## REI60 roof and ceiling

- Felt roofer, fire resistant in accordance with ENV 1187-1, in accordance with EN 13501-5 B<sub>roof</sub> t1
- Sandwich panels consisting of a wooden lattice and 70mm mineral wool
- 15mm promatect-100 plate below the sandwich panel
- According to test report 16081A
- Height under ceiling: app. 2,50m

## REI60 outer walls

- Wooden lattice
- 70mm mineral wool isolation
- Exterior: plywood plate with exterior coating
- Interior: 25mm Promatect-100 plate
- According to test report 16012A

## Inner walls

- Wooden lattice
- 60mm mineral wool isolation
- Finished in Sigmulto painted MDF plates

## Floor construction

- Linoleum flooring
- 110mm polystyrene EPS 60 isolation plate with a 20mm EPS 300 isolation plate and a 22mm waterproof bonded chipboard on top
- Maximal floor load: 250kg/m<sup>2</sup>

## Outer joinery

- Window frames in aluminum
- Insulating glass Ug = 1,1W/m<sup>2</sup>K
- Equipped with roller shutters
- Exterior doors equipped with a SKG\*\* security lock and hinges with a thief claw SKG\*\*\*

## Electrical installation

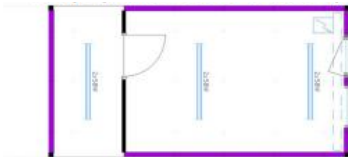
- Electrical cabinet per unit on the ceiling
- Electricity grid standard 3x400V+N
- Two double sockets with child safety
- Three fluorescent fixtures TL 2x58W

**UNITS – 18M<sup>2</sup>**

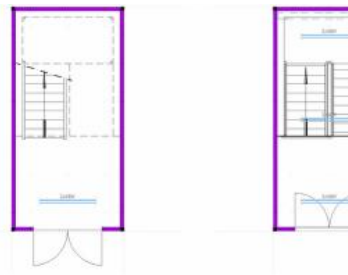
Empty unit



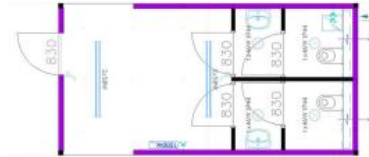
## Empty unit with hallway



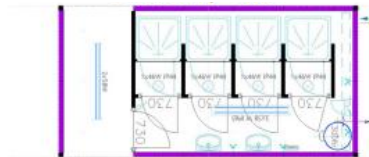
## Interior staircase



## Sanitary unit



## Sanitary unit



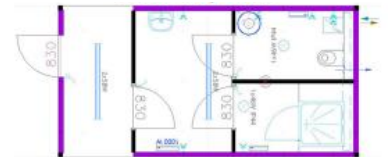
## Sanitary unit



## Sanitary unit



## Sanitary unit



## Sanitary unit

